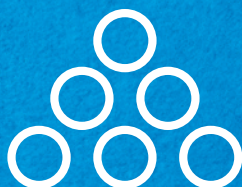




SOOO COMFORTABLE IS **IDENTIUM**®

**PRECISION IMPRESSION**



**KETTENBACHDENTAL**  
Simply intelligent

# IDENTIUM® – THE UNIQUE MATERIAL COMBINATION!

## A special generation of precision impression material

Combines the advantages of two proven impression materials (A-silicone and polyether) – Vinylsiloxanether®.



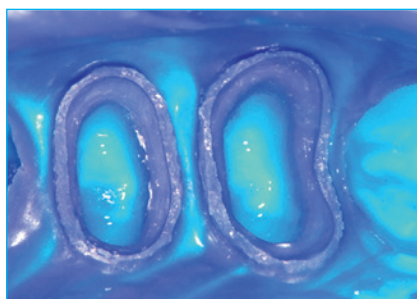
### ONE-STEP IMPRESSION

- Double-mix impressions
- Monophase impressions

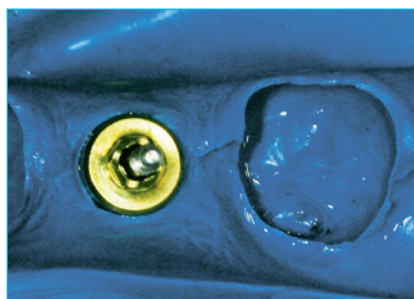


### INDICATIONS

- Crowns and bridges
- Inlays and onlays
- Functional impressions
- Implants
- Combined restorations (fixation impressions)
- Pick-up impressions



Double-mix impression



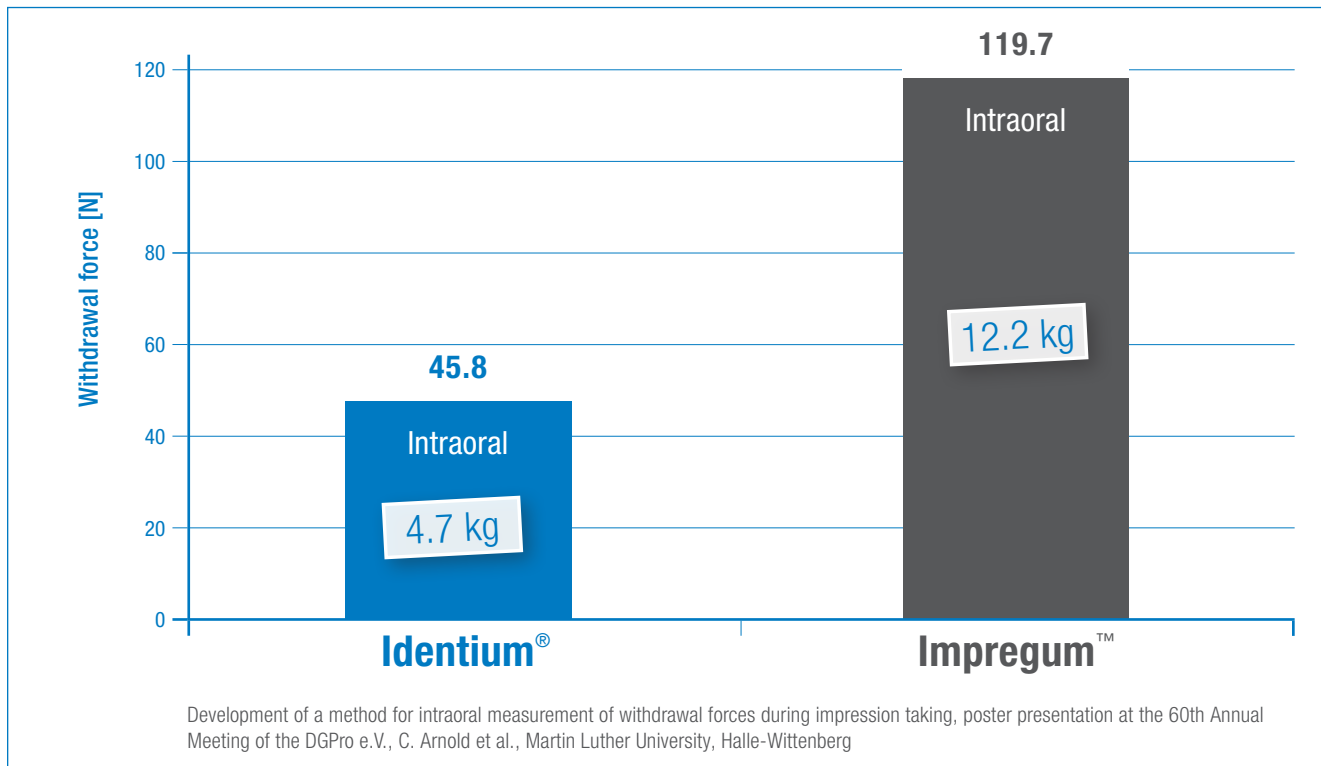
Implant impression



# IDENTIUM® – COMFORTABLE IN ALL DIMENSIONS

## Removal from the mouth - as light as a feather

Identium® vs. Impregum™ : 2.6 times lower withdrawal forces



Ease of removal from the patient's mouth avoids distortions and ensures a stress-free impression taking process.

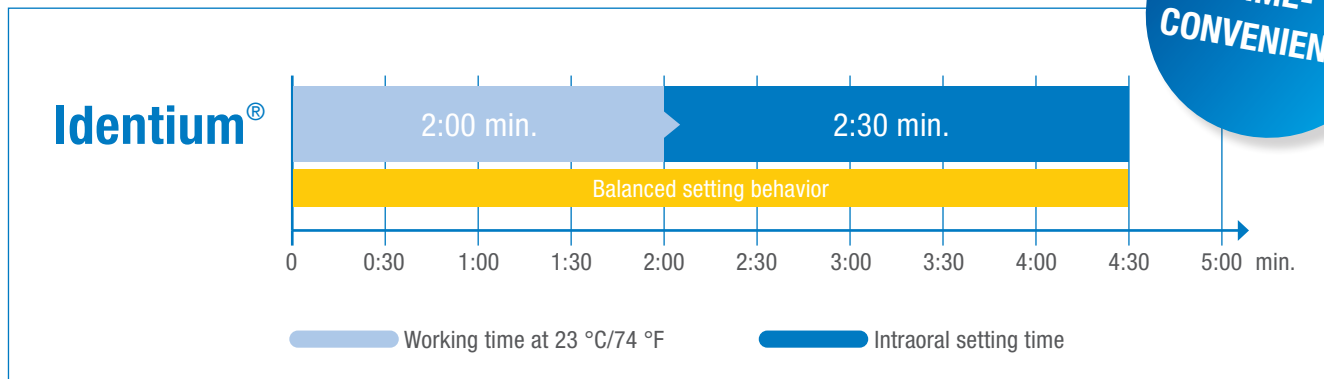
**For your precision.**



**Advantages your patient will appreciate too**

## Fast final setting time

with sufficient processing time and short intraoral setting time



Sufficient intraoral working time makes it ideal for large cases.  
**For your precision.**

## Outstanding flowability



With the outstanding flowability of **Identium® Light**, you can reproduce even the narrowest gaps in great detail. **For your precision.**



- **Odorless and tasteless material** reduces gag reflex
- **Quick setting and easy removal from the mouth** for a relaxed and pleasant experience
- **Initially hydrophilic** – good performance even with residual moisture

# COMFORTABLE AND PRECISE IMPRESSIONS

EASY REMOVAL FROM THE MOUTH

SHORT INTRAORAL SETTING TIME

INITIALLY HYDROPHILIC

**Immediately start  
applying the material:**  
no discarding, no waste



Available in viscosities  
**Heavy, Medium and Light**



Selectable setting times  
**regular** (4:30 min.)  
**fast** (3:30 min.)



Compatible with most common  
**mixing devices**



# IDENTIUM® – THE RANGE

<b>HEAVY</b>		<b>Identium® Heavy</b>	<b>Identium® Heavy Fast</b>		
	Refill pack	REF 14725 2 × 380 mL cartridges	REF 14727 2 × 380 mL cartridges		
<b>MEDIUM</b>		<b>Identium® Medium</b>	<b>Identium® Medium Fast</b>		
	Refill pack	REF 14717 2 × 380 mL cartridges	REF 14719 2 × 380 mL cartridges		
<b>LIGHT</b>		<b>Identium® Light</b>	<b>Identium® Light Fast</b>		
	Normal pack	REF 1370111 2 × 50 mL cartridges, 8 red mixing tips	REF 1371111 2 × 50 mL cartridges, 8 red mixing tips		
<b>ACCESSORIES</b>	<b>Identium® Adhesive</b>	<b>Dynamic Mixers</b>	<b>Mixing tips</b>	<b>Sympress Dispenser</b>	<b>Applyfix 5</b>
	REF 14204 10 ml bottle	REF 17902 45 pieces white	REF 17249 / REF 17250 50 mixing tips red / 100 mixing tips red	REF 35911 Electrical dosing and mixing device	REF 17204 2 application syringes, 12 syringe tips



## NOTES

---



---



---



---



---

Kettenbach LP  
16052 Beach Blvd. Ste. 221  
Huntington Beach, CA 92647, USA  
Phone: 877-532-2123  
Fax: 888-892-9820  
Website: [www.kettenbach-dental.us](http://www.kettenbach-dental.us)  
Web shop: [www.kettenbachusa.com](http://www.kettenbachusa.com)  
Custservice@kettenbachusa.com

Not for use, sale and  
distribution in Germany.

**KETTENBACHDENTAL**  
Simply intelligent