

Esthetic preview through a mock-up procedure, i.e., how to kick-start the process.

DR. DANIELE GENSINI

Graduated with honors in Dentistry and Dental Restoration at the University of Siena in 2004, where for three years he tutored students of the dental restoration faculty headed by Prof. Andrea Borracchini.

He did further studies in Italy and abroad in dental restoration, periodontology, implantology, dental esthetics and gnathology, obtaining a one-year Masters under Dr. Mauro Fradeani, two two-year Masters under Dr. Roberto Pontoriero, took annual courses under Dr. Stefano Gori and an annual course under Dr. Mario Molina.

He has dedicated his clinical practice to restoration on natural teeth and implants, implantology and periodontology and dental esthetics using direct and indirect techniques. He teaches and presents courses and conferences in English both in Italy and abroad.

Since 2018 he has been a member of the Fradeani Education team, presenting and tutoring on several courses.



Dr. Daniele Gensini

High quality materials for the best mock-up results

During esthetic rehabilitation with ceramic veneers, bi-directional communication between doctor and patient is essential. It is important to understand the patient's personality and what they want, and turn that into a preliminary project which, if approved, will be transformed into the definitive restoration.

The best way to communicate the results of our esthetic functional analysis is through the mock-up, i.e., the transformation into resin of the wax-up made by our trusted dental technician based on the indications provided to him/her, which allows the patient to preview the restoration before it is actually carried out by simulating all the changes in form, arrangement and color that we intend to carry out by means of esthetic restoration with veneers directly into the patient's mouth.

It is therefore fundamental to plan the case, as best as possible, from the very beginning, starting with the impressions based on which the wax-ups are created. First impressions are generally taken using a less accurate material such as alginate, which will undoubtedly lead to defects and deficiencies in the work model, resulting in the introduction of errors right from the initial phases of restoration. However, by taking an impression using a high-accuracy material such as the silicone Panasil®, which comes in light- or heavy-bodied form or also as putty material, you ensure that the critical areas such as the gumline and all the particular features of the elements involved are recorded, resulting in an extremely accurate replica of the real situation (fig. 1).

This results in a precise and reliable work model for our dental technician to work with, being able to reproduce all the necessary details (fig. 2).

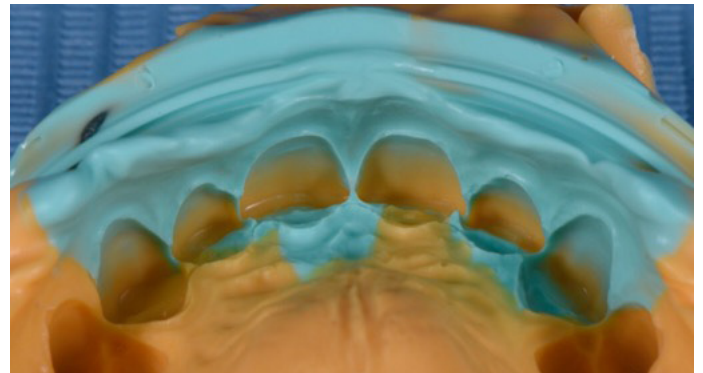


fig. 1, silicone impression with Panasil, Kettenbach Dental

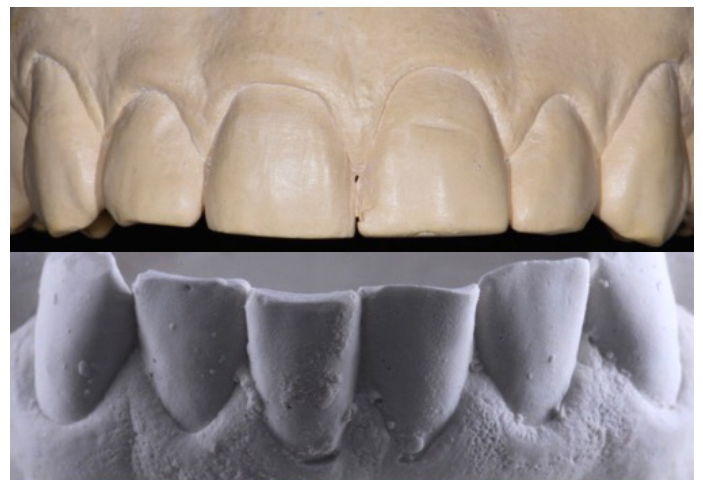


fig. 2, transference into a precise gypsum work model of the patient's mouth

From a preview to an esthetic and functional solution

As such, we provide optimum working conditions for our technician to be able to create the wax work model and fully replicate it in the patient's mouth using the mock-up mold. The mold is guaranteed to be more realistic and detailed because it has derived from a high-precision model. This results in better communication between the doctor and the patient and the approval of the proposed restoration. The mold will then be used as an accurate guide in the preparation of our dental elements and finally we will be able to use it reliably as a provisional denture on invasiv cases while the permanent restorations are being made (fig. 3).



fig. 3, perfect mock-up can be made f.e. with Visalys® Temp, Kettenbach Dental



For mock-up lab treatments done with Panasil® lab Putty and pre-views done with Visalys® Temp you can watch this video.



fig. 4, satisfying results

SUMMARY

Therefore, a high-precision impression material such as Panasil® is ideal not only to accurately record our definitive restorations, but also for carrying out the rehabilitation project and, especially, to ensure efficient communication with the patient through the mock-up procedure, thanks to which the patient is able to wear and enjoy his or her new smile early and see what the final outcome will look like even before beginning treatment (fig. 4).



Panasil® precision impression material in different viscosities for best impressions



Visalys® Temp, for exceptionally stable and fracture-resistant temporary restorations or mock-ups.

